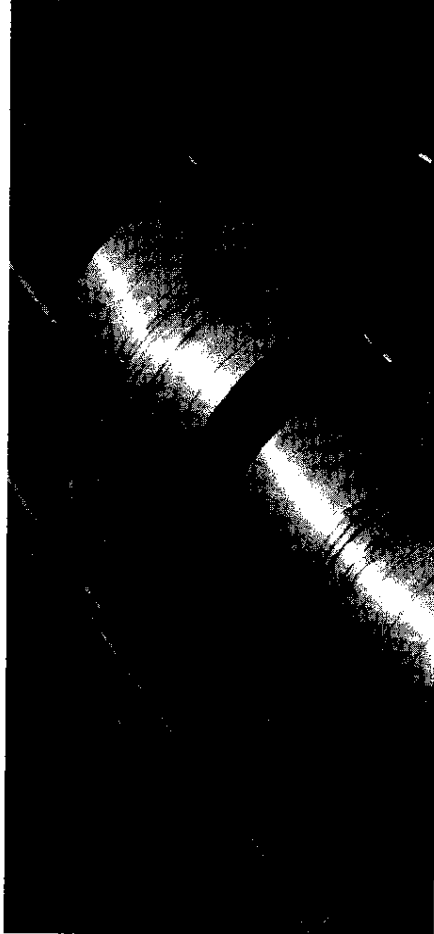


Jacobsen Declaration Exhibit C

TRAINS[®]

MAGAZINE



November 04

Railroads & Chemicals

All about one of the industry's prime sources of traffic

BN Trainmaster

Memoir of a railroader's early career

Richard Steinheimer Tribute

A retrospective on one of the great rail photographers.

Map of the Month

Burlington Route predecessor railroads.

SUBSCRIBE TODAY! 800-533-6644

DCC Corner

Meet DecoderPro

One of the most useful things about Digital Command Control (DCC) is that it allows us to customize decoder functions. A decoder's address, lighting effects, motor control, and function mapping are all controlled by adjustable numeric values called "configuration variables" (CVs). However, programming CV values on the small display screens of most DCC systems can be time consuming and is often frustrating.

Thankfully a group of dedicated hobbyists have created computer software that makes the task of programming decoders much simpler. Meet DecoderPro!

DCC and your computer. DecoderPro is a computer program that features easy-to-use display screens, allowing you to choose how you want your decoder to work by simply clicking your mouse – the software then enters the correct numeric values in the decoder's CVs for you.

Sound good? It is, and it's free. DecoderPro is one of several programs available from a private group called JMRI (Java Model Railroad Interface). Writing computer software for model railroaders, JMRI uses a universal

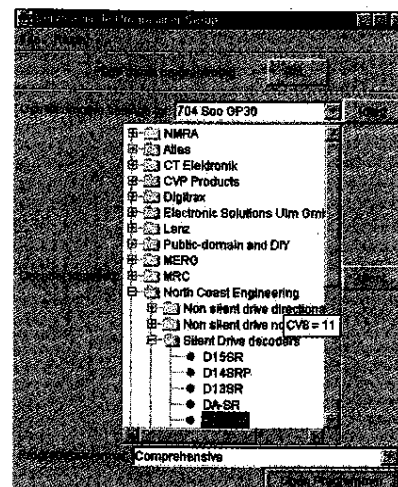


Fig. 1 Decoder selection page. By clicking the "Ident" button, DecoderPro will automatically identify the make and model of the decoder in your locomotive.

computer language called "Java." Java works with many different types of computer operating systems, including Linux, Macintosh, OS/2, and Windows. At home, I run it on an old 300 MHz machine using Windows 98.

The DecoderPro "freeware" is continually updated by JMRI. At this writing the current revision is 1.4, which I downloaded from the JMRI Web site at <http://jmri.sf.net>.

What systems can use DecoderPro? To program decoders with DecoderPro on your computer, you'll need some additional hardware. In most cases, this is simply

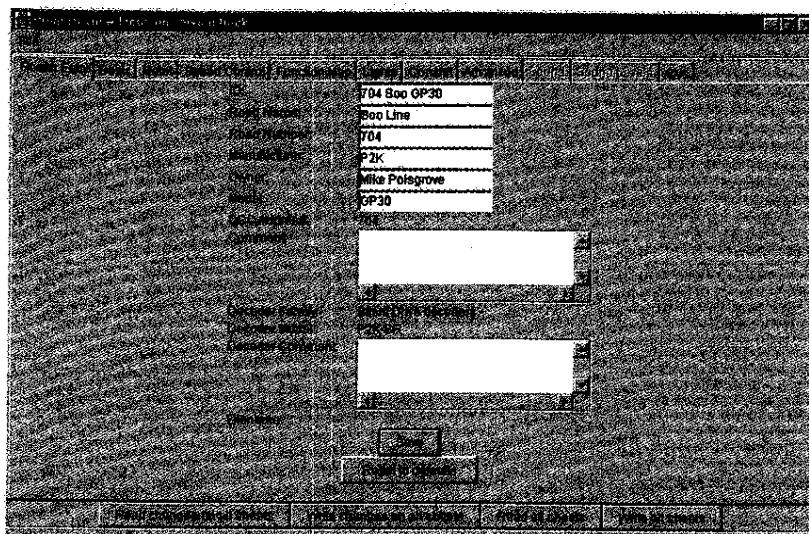


Fig. 2 Comprehensive programming. DecoderPro allows you to select, read, and program all of a given decoder's options using plain English. The software computes the correct CV numeric value for you.

Mike Polsgrove

the DCC system you already own. The DecoderPro Web site provides a complete list of current DCC systems on the market and what parts you need to connect them to your computer. I use a North Coast Engineering system and needed only a cable between the DCC base station and the serial port on my computer.

However, if your computer and your model railroad are on different floors of your home like mine, you can avoid having to move one or both items by using a standalone programmer called a "SPROG." This small component takes the place of a DCC system, plugs between your computer and programming track, and is available fully assembled or as a kit. For more information visit the manufacturer's Web site at www.sheerstock.fsnet.co.uk/dcc/sprog.htm.

Once the hardware is connected, there's just one more step before you can program decoders. The very first time you run the DecoderPro software, it will ask you what DCC system you're using and which serial port of the computer it's connected to.

Using the software. The first screen that appears when you start DecoderPro gives you a choice of using the programming track or programming on the main. If you are programming a newly installed decoder, you'll want to choose the programming track so you can set the decoder's address.

After choosing "Programming Track," the next screen that appears asks you about the type of decoder installed in the locomotive. You can choose the decoder type from a long list or you can click the "Ident" button to ask the decoder to identify itself, as shown in **fig. 1**. (DecoderPro gives you several options if your decoder is not listed.)

On the bottom of the screen, select either "Basic" or "Comprehensive Programming" and click on the "Open Programmer" button. I used comprehensive programmer, as shown in **fig. 2**.

The options available on each programming page (DecoderPro calls them "sheets") depend upon the brand and model of decoder you're using in your locomotive.

We Can Hardly Container Ourselves!

Look for the entire family of deluxe N Scale containers. Top Row: NEW 53' Corrugated Domestic box, 40' Reeter, NEW 40' Hi Cube international box.



Bottom Row: 20' Corrugated, 45' Corrugated, 48' Domestic, and 40' Corrugated box. We also make the cars to carry them: Twinstack, Lo-Pac 2000 & Maxi-III.

deluxe innovations

www.deluxeinnovations.com Call or Write for our Free Catalog...
 po box 4213+Burbank, CA+91503-4213 ph 818-848-DLUX fax 818-848-1667

NICHOLAS SMITH TRAINS

2343 West Chester Pike • Broomall, PA 19008
 (610) 353-8585 • ESTABLISHED 1909

MINIMUM ORDER: \$30.00 • 10% Restocking charge on returns.
 For orders only, dial (800) 848-9119 • Fax (610) 359-9846
 All orders under \$100.00, add \$7.00 for shipping & handling.
 All orders from this ad over \$100.00 shipped free (except track) in the continental USA.
 No P.O. Box #'s. PA residents add 6% sales tax.
 Prices Subject to Change Without Notice.

STORE HOURS: M, W, F 10-10 • Tu, Th 10-7 • Sat. 10-5 • Sun. 10-5 (Nov. & Dec. only)
www.nstrains.com

LIONEL (O SCALE)		MTH (O SCALE)			
21781	Congressional Set	899.95	18311	Disney Electric Loco	199.95
29271	Lionel Coia Trailer	12.95	19723	Disney Ext. Vision Caboose	49.95
18423	Step Van Motor Unit	39.95	16760	Pluto & Cats An. Gondola	44.95
18424	Pickup Truck Motor Unit	39.95	19060	NYC HW Pass Set	279.95
16677	Flat w/ RN SLB	24.95	22915	Municipal Building	9.95
16726	Army Firecar	29.95	18567	PRR GP9	199.95
16738	Pepe & Penelope Boxcar	16.95	11743	C&O Set	175.00
16955	Dep. Flat w/ Challenger	19.95	19423	Circle L Flat w/2 Cars	34.95
16957	Dep. Flat w/ Tractor	19.95	19676	Federal Mint Car	37.95
16958	Aviation Flat w/ Helicopter	19.95			
18434	Parky & Petunia Handcar	29.95			
19286	"All Aboard" Boxcar	19.95			
19289	G464 Monon Boxcar	19.95			
18630	C&NW 4-6-2	299.95	6738	RK UP 60 Ft 2 Car Set	74.95
12932	Lumber Pig Trac/Trail	8.95	6739	RK UP 60 Ft Coach	99.95
16718	Marine Corp Missile Car	28.95	80002A	DAP Clear Body SF F3 ABA 4 Motors	399.00
16652	Radar Car	19.95	3042	Premiere C&O M Steam Turbine	595.95
16318	Dep. Flat w/ Reel	18.95	2115-1	RK SF Dash 8 w/Proto	239.95
38022	WM Challenger	694.95	2131-1	RK SF F3 AA w/Proto	239.95
39203	6464 Moine Central	23.95	2124	RK PRR Rotary Snowplow	49.95
19496	Westside Log Car 3 Pack	79.95	2009-1	RK UP 3 PC Gas Turbine w/Proto	349.95
29281	6464 Post Merger o/Stamp	59.95	2130-1	RK PRR F3 AA w/Proto	229.95
28038	UP 2-8-0	399.95	2125-1	RK D&H ALCO PA AA w/Proto	219.95
28034	UP 4-6-2	299.95	2126-1	RK D&RG ALCO PA AA w/Proto	219.95
19107	SP Full Dome	69.95	2126A	RK D&RG ALCO PA B Unit	49.95
19130	Lockawanna 4 Car Set	249.95	2126A	RK UP NW2 Switcher w/Proto	174.95
14000	264 Fork Lift Platform	164.95	2138-1	RK CN&W NW2 Switcher w/Proto	174.95
12835	Fueling Station	64.95	2139	RK UP PA w/Proto 2.0	199.95
21752	Conrail Flat Set	395.00	2218	RK UP PA B Unit	49.95
18580	PRR GP-9 Dummy	149.95	2218-3	RK SF Dash 8 w/Horn	99.95
18573	SF GP-9	149.95	2115	RK N&S Dash 8 w/Horn	99.95
18569	CB&Q GP-9	249.95	2114	RK N&S Dash 8 w/Proto	199.95
28016	Southern 4-6-2 Loco	389.95	2154	RK D&RG Galloping Goose w/Horn	129.95
18653	B&A 4-6-2 Loco	199.95	2154-1	RK D&RG Galloping Goose w/Proto	239.95
18054	NYC 0-4-0 Switcher	199.95	1159-1	RK PRR 2-8-0 w/Proto 2.0	199.95
11839	Hooker Train Set	299.95	1136-1	RK SF 2-6-0 w/Proto	179.95
19303	Lionel Lines Hopper	19.95	1137-1	RK B&O 2-6-0 w/Proto	179.95
16958	Flat w/Holland Tractor	17.00	2158-1	RK PRR Doodlebug w/Proto	199.95
19733	NYC Caboose	29.95	2515-1	RK PRR GG-1 w/Proto	299.95
19734	SP Caboose	29.95	2516-1	RK Conrail GG-1 w/Proto 2.0	299.95
19824	Target Launcher Car	22.95	2516	RK Conrail GG-1 w/Horn	199.95
16710	Missile Car	59.95	2517	RK PENN Central GG-1 w/Horn	199.95
19282	6464-196 Santa Fe	23.95	6737	RK UP 60 Ft 4 Car Pass Set	149.95
19285	6464-275 Bar	23.95	7611	RK Flat w/Tractor	24.95
16246	Contadina Boxcar	19.95	7614	RK Flat w/Dump Truck	24.95
16360	N&W Maxi-Stack Flatcar	64.95	3047-1	PM NYC Niagra w/Proto	874.95
16904	NYC TLUX Flatcar	64.95	3056-1	PM SF Texas 2-10-4 Steam w/Proto	975.95
15000-3	Waffleside Boxcars (ea)	19.95	6532	PM SEPTA AM Reef 4 Car Set	169.95
12916	Oper. Water Tower	69.95	6514	PM N&W Streamline Pass Set	225.00
16970	LA County Flat w/Boat	19.95	1029	PM #57 Orange Lamp Set	12.95
16669	Flat w/Plane	28.95			
19732	SF B/W Caboose	46.95			
17127	D-H Hopper	32.95			
17223	MR Dk-Door Box	33.95			

Let Us Get You
ON TRACK!

Removes Corrosion On:

- Electrical Contacts
- Rail Tracks
- Armatures

Also...

- Weatherizes Paint
- Removes Paint

Fits into tight spots!

braser.com • brash@braser.com • 811 774 1531

The #1 choice for model trains on the Internet™

InternetTrains

www.internettrains.com

The Original Internet Model Train Superstore®

A must have item for every modeler. Get this deluxe magnifier headstrap w/lights for FREE with any \$50 purchase. A \$40 Value! See link below for details. Offer expires 11/15/04

FREE

You must use the following link to receive the free magnifier offer:
www.internettrains.com/freevisor.html
or call (800) 369-0878 and ask for offer MR Free Visor

DCC Corner

As manufacturers often release new decoders, it's a good idea to check the JMRI Web site periodically for updates.

To program a new locomotive, begin at the "Roster Entry" tab. This page allows you to save setting files for each locomotive on your computer. You can use this information to program similar engines or to reprogram a particular locomotive should you change the decoder. The example in fig. 2 is for one of my Life-Like Proto 2000 Soo Line GP30s. Be sure to click the "save" button when you're done entering the information.

Next, click on the "Basic" tab. This page allows you to set the short and extended decoder addresses, as well as several other basic decoder functions. When you're ready, click the "Write Changes on Sheet" button – the software will program your decoder with this information. The program also allows you to read back any written information, but be aware that it might take a long time.

In the Comprehensive mode, you also have pages for motor control, speed control, function mapping, lights, consisting, sound, and sound levels. Each one of these allows you to determine, in English, how you want your decoder to behave, leaving the task of determining the numeric programming value to the computer.

"Not all Couplers are Created Equal"
ACCEPT NO SUBSTITUTES!

Kadee®

The Original & Still The Best
Made Entirely in the U.S.A.

#118 STANDARD
"SF" SHELF COUPLER

- ✓ All Metal Coupler
- ✓ Metal Knuckle Spring
- ✓ Metal Centering Spring
- ✓ Fully Functioning Shelf
- ✓ Made Entirely in the U.S.A.
- ✓ \$3.80 Two Pair
- ✓ HO Scale



Available through your
local authorized Kadee® dealer

Kadee® Quality Products Co.
673 Avenue C • White City, OR 97503-1078 U.S.A.

Tel: (541) 826-3883 • Fax: (541) 826-4013 • www.kadee.com • mail@kadee.com

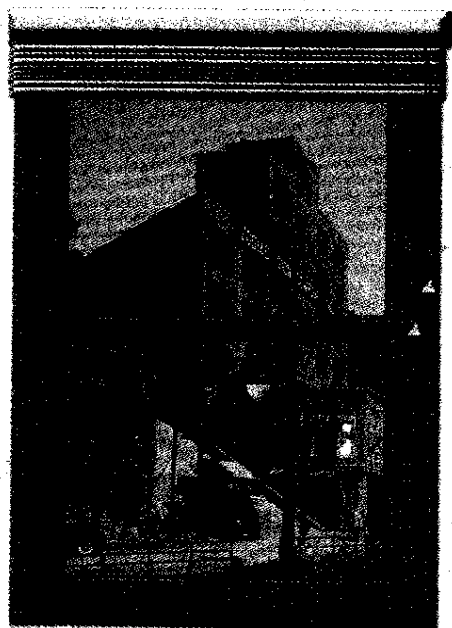
**YOUR WINDOW
OF OPPORTUNITY
IS NOW**

Purchase the best
HO, N and O scale
buildings on the market!

- Authentic architectural design
- Competitively priced
- Quick and easy to build
- Available at your local hobby shop

With DPM you can build on entire
city or a single building.

DPM
DESIGN PRESERVATION MODELS



P.O. BOX 66. LINN CREEK, MO 65052
www.dpmkits.com

Time to play. DecoderPro does a nice job of simplifying the often complex task of programming decoders. I was impressed at how quickly and easily I could program even advanced functions using the software. Though I've covered some of the basic uses, DecoderPro offers a host of additional features. And you can't beat the price! **MR**

Correction: To wire the rear headlight on a standard Athearn locomotive as mentioned in the October 2004, DCC Corner (page 102), use the blue and yellow decoder wires, not the colors listed.

Send your questions about Digital Command Control to DCC Corner, *Model Railroader* magazine, P.O. Box 1612, Waukesha, WI 53187, or e-mail dcc@mrmag.com. We regret we can't answer all the questions we receive.

Dream it. Plan it. Build it.

90 A layout built to travel

Z scale Val Ease Central: a globe-trotting hobby ambassador
by Jeffrey MacHan

94 Modern monster industry

Techniques and materials to model a prefab concrete warehouse
by Dave Davis

102 Information Desk

Model a modern plate-girder bridge
by Carl Swanson

108 DCC Corner

Meet DecoderPro: a tool for programming decoders
by Mike Polsgrove

112 Product Reviews

Peco HO scale code 83 no. 6 turnouts
N scale Pennsylvania RR N5C caboose from Bowser
InterMountain N scale SD40T-2 "tunnel motor" locomotive
▶ Online bonus modelrailroader.com
World War II troop sleeper and kitchen car from Walthers in HO

118 Cartoon

122 Trains of Thought

by Tony Koester

126 Trackside Photos

143 Index of advertisers

144 Model Railroading is Fun

by David Popp

Coming next issue: In December we revisit Ken McCorry's enormous HO scale Pennsylvania RR layout, but this time it's set in the Penn Central era – and it's bigger!

Model Railroader (USPS 529-810, ISSN 0026-7341) is published monthly by Kalmbach Publishing Co., 21027 Crossroads Circle, P.O. Box 1612, Waukesha, WI 53187-1612. Periodicals postage paid at Waukesha, Wis., and additional offices. POSTMASTER: Please send address changes to *Model Railroader*, Kalmbach Publishing Co., 21027 Crossroads Circle, P.O. Box 1612, Waukesha, WI 53187-1612. Printed in USA. Canada Publication Mail Agreement #40010760.

Contributing to *Model Railroader*: We welcome contributions from our readers, including articles, photographs, and prototype drawings. For detailed information on submitting material to MR, write or call our editorial assistant. *Model Railroader* assumes no responsibility for the safe return of unsolicited material. We assume unsolicited material is intended for publication by Kalmbach Publishing Co. unless otherwise noted. We assume letters, questions, news releases, and club news items are contributed gratis.

